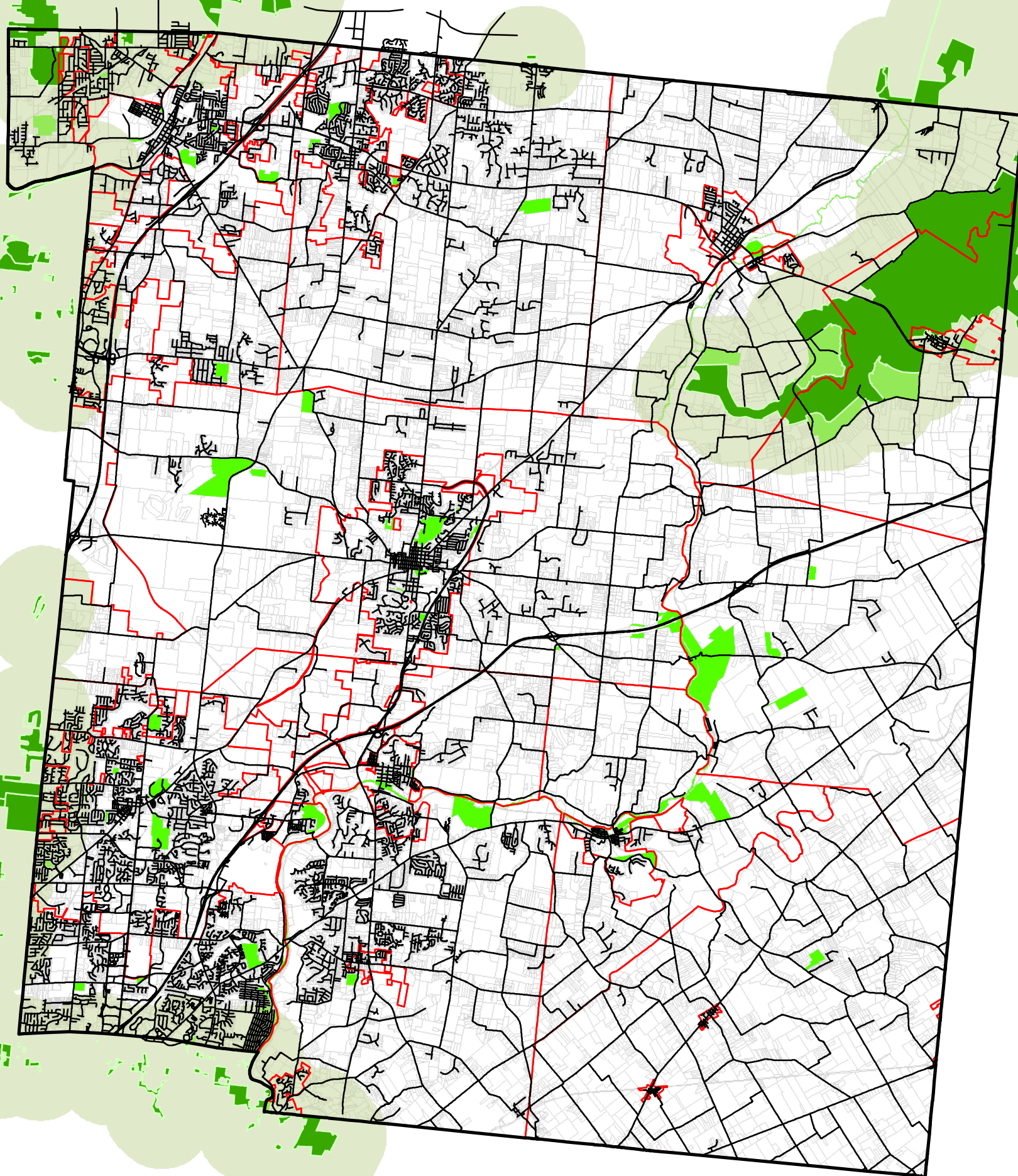
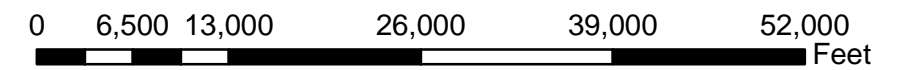


Adjacent Jurisdictions Parks Service Areas



- Warren County Boundary
- Warren Local Jurisdiction Boundaries
- Existing Public Roads
- Parcel Boundaries
- Adjacent Political Jurisdiction Parks
- One Mile Surrounding Area
- Existing Parks In Warren County



Scale: 1 Inch = 13,000 Feet

